

close 11-12 for IC5 write protection
 close 15-16 for SIO A block transfer mode
 close 17-18 for SIO B block transfer mode

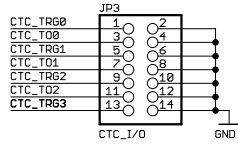
see datasheet IC5 for pin functions and addressing

System TRAIN-2: CPU, PIO, SIO, CTC, I2C-FLASH
 Copyright 2010 by Mario Blunk - electronics & IT engineering
 visit us at <http://www.train-z.de>

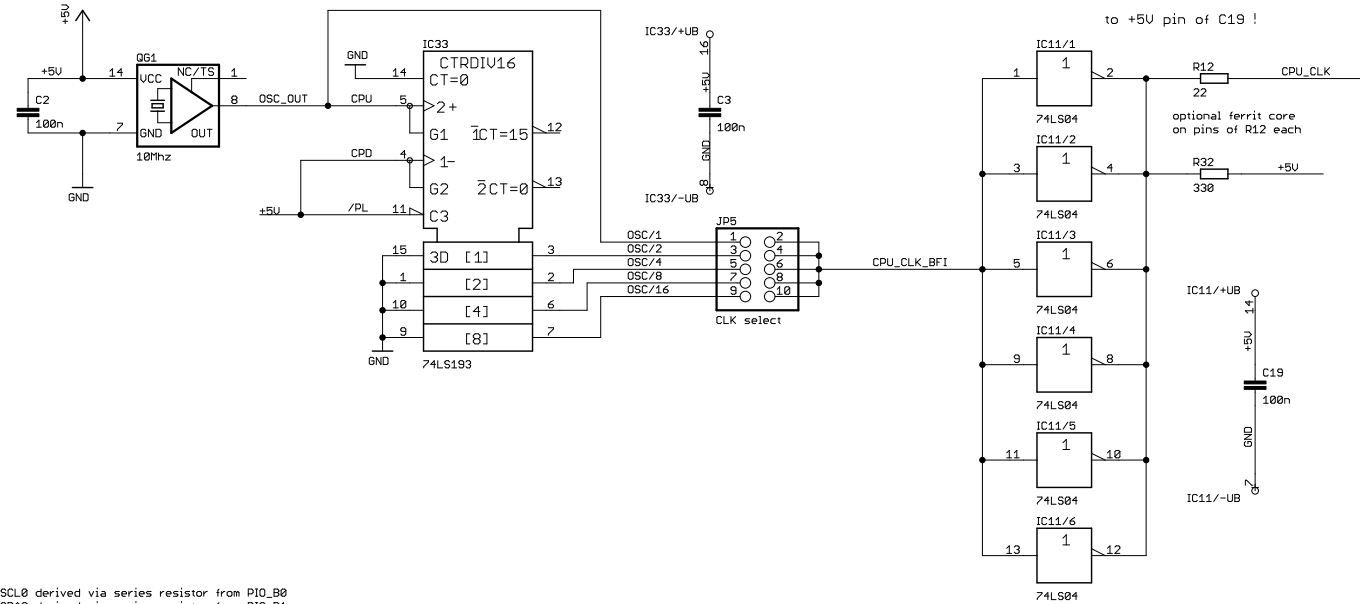
TITLE: MAIN_U093r4

Document Number: _____ REV: 4

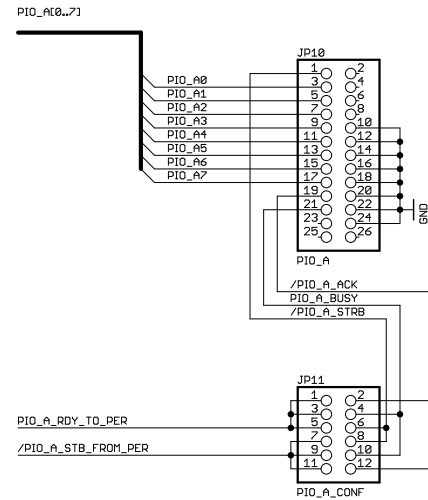
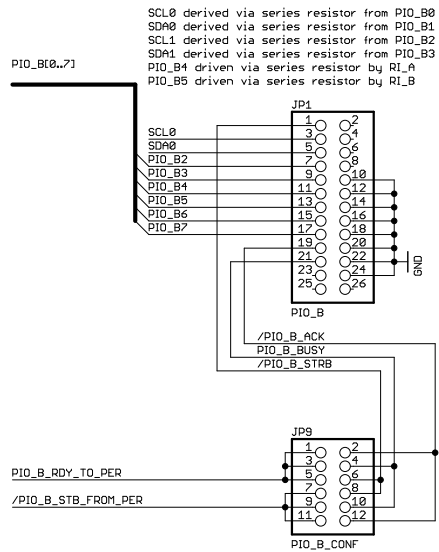
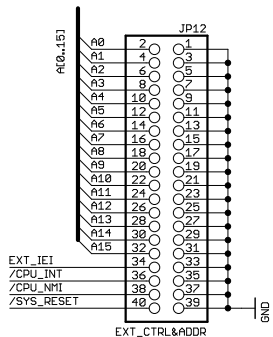
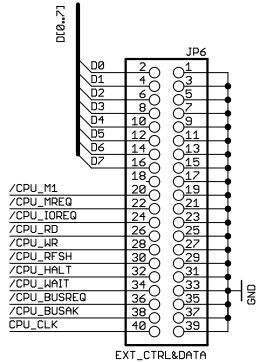
Date: 1/18/12 5:25 PM Sheet: 1/4



Connect pin 11 and 13 for low level system test.



NOTE: 330 Ohms resistor R32 soldered from IC11 pin #2 to +5U pin of C19 !



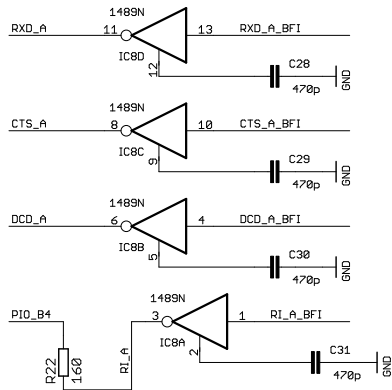
System TRAIN-2: clock, connectors
Copyright 2010 by Mario Blunk - electronics & IT engineering
vist us at <http://www.train-z.de>

TITLE: MAIN_U093r4

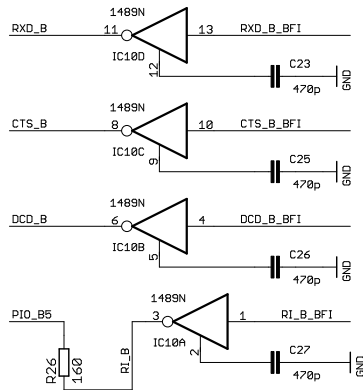
Document Number: REV: 4

Date: 1/18/12 5:25 PM Sheet: 2/4

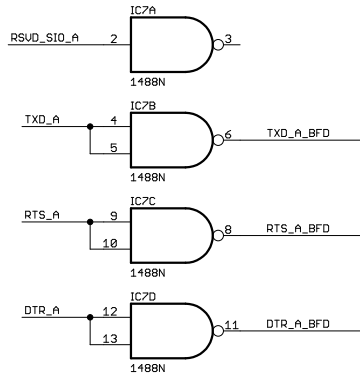
RS232 line receiver SIO A



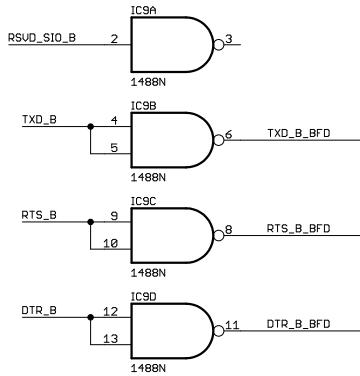
RS232 line receiver SIO B



RS232 line driver SIO A

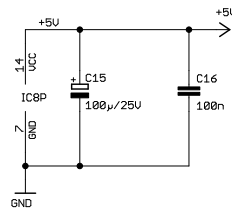
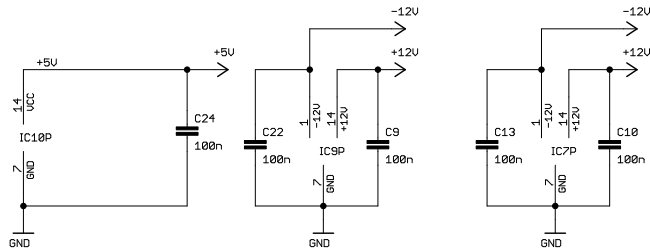
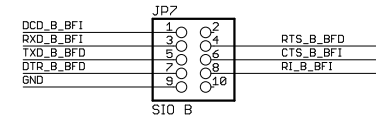
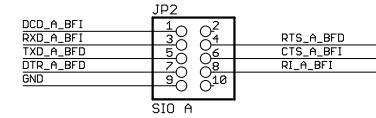


RS232 line driver SIO B

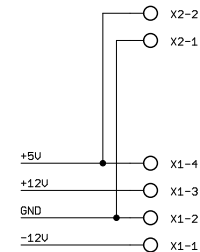


TXD - transmit data - output
 RTS - request to send - output
 RI - ring indicator - input
 DTR - data terminal ready - output
 DCD - data carrier detect - input

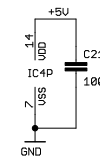
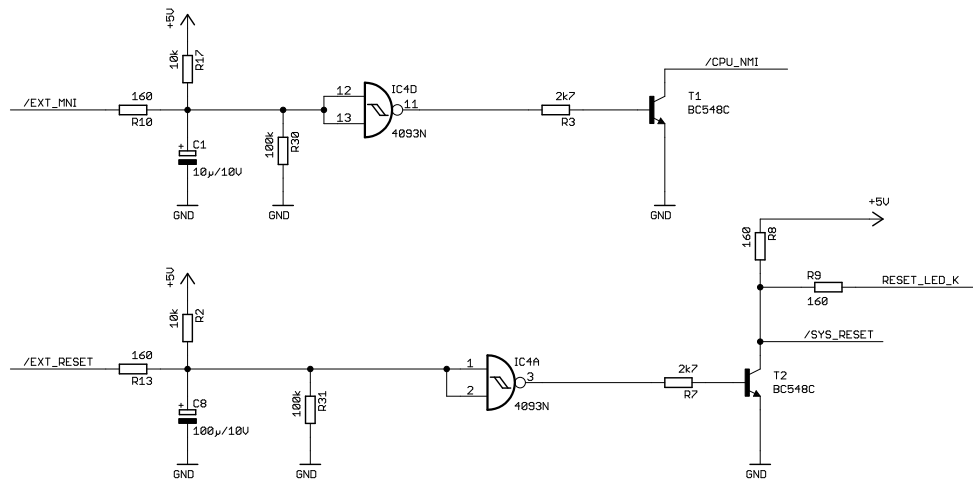
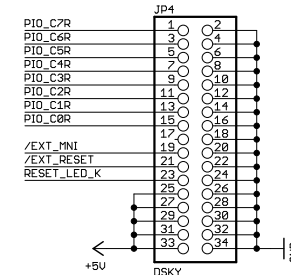
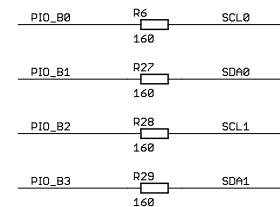
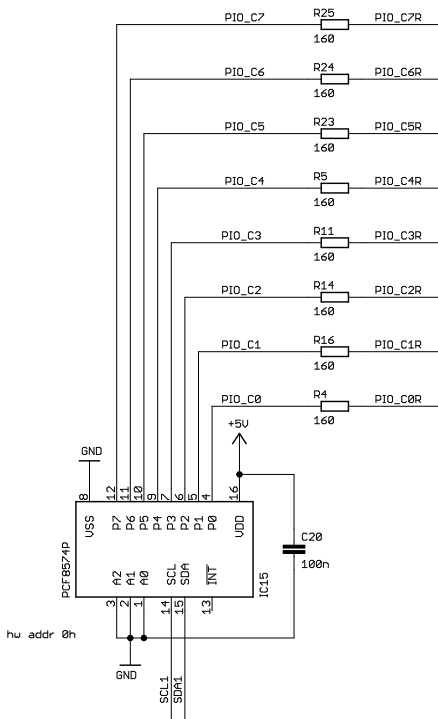
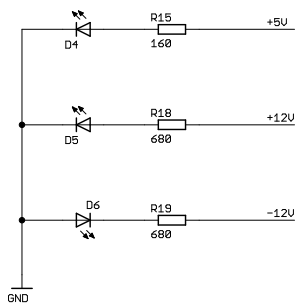
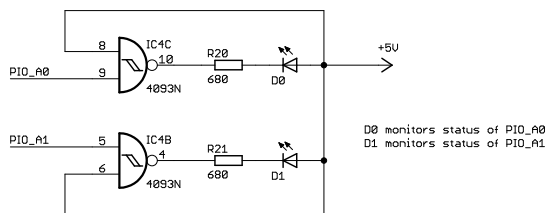
RXD - receive data - input
 CTS - clear to send - input
 RI - ring indicator - input
 DSR - data set ready - input - not used / pin 2



power supply



System TRAIN-Z: RS232, power supply Copyright 2010 by Mario Blunk - electronics & IT engineering visit us at http://www.train-z.de	
TITLE: MAIN_U093r4	
Document Number:	REV: 4
Date: 1/18/12 5:25 PM	Sheet: 3/4



System TRAIN-Z: LEDs, NMI, RESET, I²C-Expander
 Copyright 2010 by Mario Blunk - electronics & IT engineering
 visit us at <http://www.train-z.de>

TITLE: MAIN_U093r4

Document Number: REV: 4

Date: 1/18/12 5:25 PM Sheet: 4/4